

# #245 221 6 AVENUE SE

FOR  
LEASE



## PROPERTY HIGHLIGHTS

Retail unit located on the busy corner of Macleod Trail and 6th Ave. Strategically located between Calgary's Chinatown and the high density East Village provides a 24 hour customer base to this downtown corner. Close to the Calgary Public Library, Olympic Plaza, Bow Valley College, and the C-Train. Great visibility and pedestrian traffic at the base of a 300 unit residential building with professional management.

## PROPERTY DETAILS:

- 2451 sq ft of corner • \$6 op. costs. retail space.
- \$21 base rent

PETER  
THYMARAS

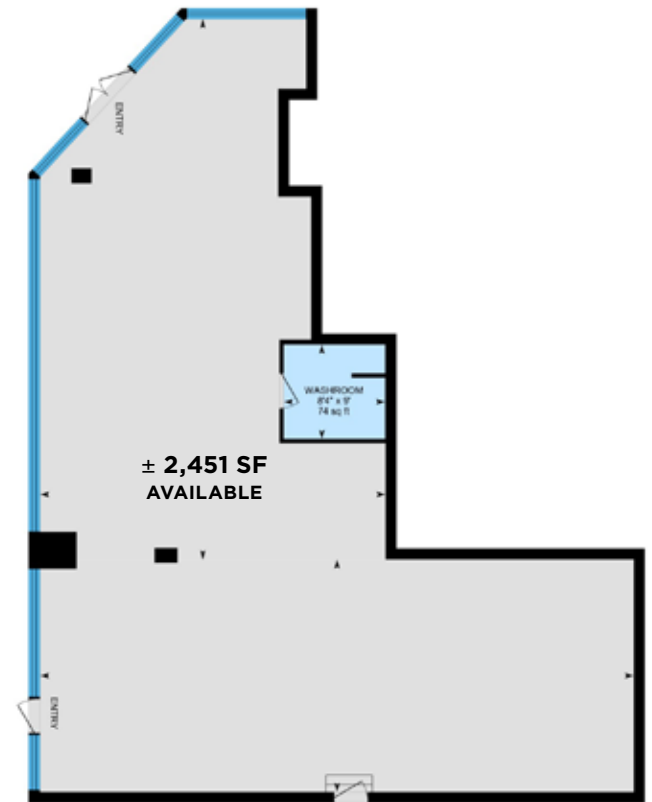
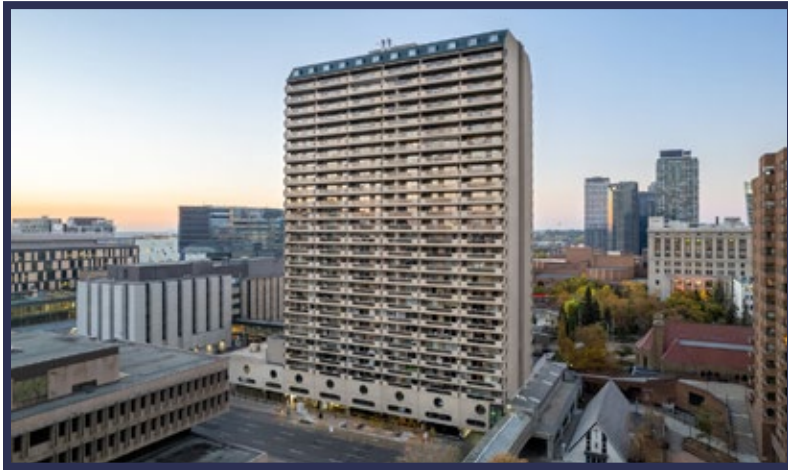
Calgary's Local Experts



403.815.6233  
peter@toppickrealestate.ca  
TopPickRealEstate.ca  
toppickrealestate

GRAND  
REALTY & MANAGEMENT  
211, 602 16th Avenue NW Calgary, AB T2M OJ7

# #245 221 6 AVENUE SE



FLOORPLAN

PETER  
THYMARAS

Calgary's Local Experts



403.815.6233  
peter@toppickrealestate.ca  
TopPickRealEstate.ca  
toppickrealestate

GRAND  
REALTY & MANAGEMENT

211, 602 16th Avenue NW Calgary, AB T2M OJ7